

Address wireless demand with Wi-Fi 6.



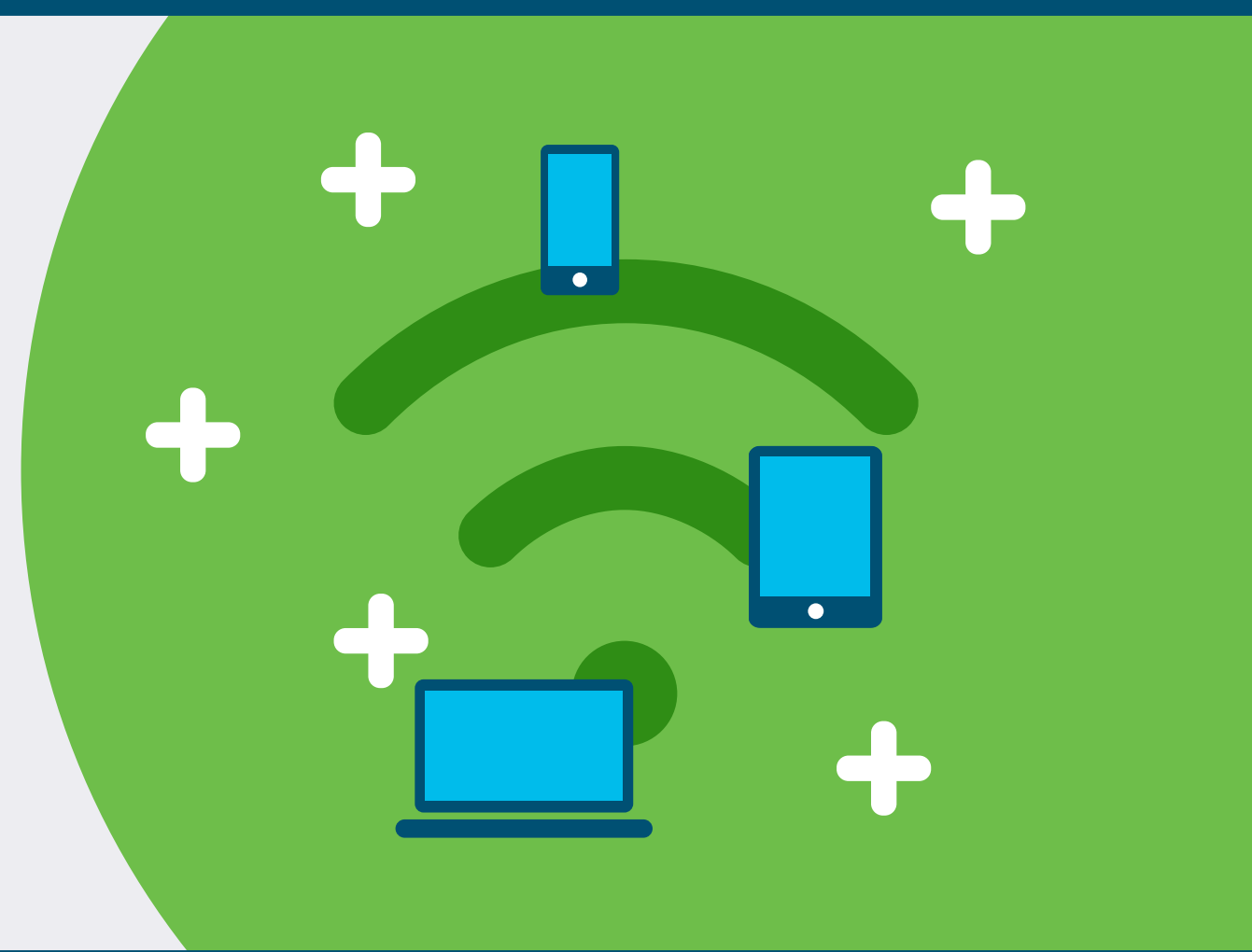
Offer more reliable Wi-Fi.



A more consistent and dependable network connection provides a seamless experience for clients, Internet of Things (IoT), and all apps, especially voice and video.

Increase your network capacity.

As wireless demands increase and include more IoT devices, Wi-Fi 6 (802.11ax) handles more data across the airways than previous Wi-Fi standards. It also handles more active clients per access point.



Boost speed and bandwidth.



Wi-Fi 6 achieves speeds up to 4 times faster than previous Wi-Fi standards, improving the user experience and performance of bandwidth-hungry apps like voice, video, and collaboration.

Improve the 2.4-GHz band.

The last upgrade for 2.4 GHz was 10 years ago. Wi-Fi 6 brings new improvements to the 2.4-GHz band that make your wireless work better with IoT devices that require more energy efficiency and better Wi-Fi coverage.



The Cisco advantage



Go beyond Wi-Fi 6 with Cisco Catalyst 9100 Series access points and our wireless controllers.

- Gain intelligence that's gathered, analyzed, and used to run your network more efficiently through [Cisco DNA Assurance](#).
- Address the growing number of IoT devices with app hosting and multiprotocol support of Wi-Fi, Bluetooth Low Energy (BLE), and Zigbee.
- Automatically separate and secure IoT devices from your enterprise network with Cisco Software-Defined Access (SD-Access).
- With Cisco's RF application-specific integrated circuit (ASIC), expand wireless access with intelligence and gain comprehensive security via Layer 1 device-level classification and intrusion protection.

Learn more about how the Catalyst 9100 Series access points and the Catalyst 9800 Series wireless controllers support new opportunities.

[See Catalyst 9100](#)

[See Catalyst 9800](#)

[Accelerate your Wi-Fi 6 journey with Cisco Services >](#)

[Go URL](#)